



Low-Code-Days LANSA

Join us for Low-Code Days, a tailored, all-day, FREE virtual event for low-code professionals. Featuring sessions that focus on helpful low-code hacks and a sneak peek at LANSA's exciting new solutions for enterprise dev teams.

We have a session for North America on the 7th:
<http://communications.lansa.com/LowCodeDaysOctober2020>

All Low-Code. All Day. All Virtual.

LOW-
<CODE>
DAYS
LANSA

Wednesday, October 7 |
9 a.m. to 3 p.m. CDT

And a session for EMEA on the 14th:
<http://communications.lansa.com/LowCodeDaysOctober2020EU>

All Low-Code. All Day. All Virtual.

LOW-
<CODE>
DAYS
LANSA

Wednesday, October 14
12 p.m. to 6 p.m. BST | 1 p.m. to 7 p.m. CEST

INSIDE THIS ISSUE

- Low-Code-Days LANSA 1
- Low-Code Day Sessions 2
- Portalize with Multilingual functionality 3
- TPTH x_run parameter has been
changed in LANSA V15 6
- Composer Purge task via Windows
Scheduler 8
- Visual LANSA Forum 15

Low-Code Day Sessions

Keynote: The LANSA Vision

LANS

A's General Manager Craig Trautman opens Low-Code Days talking about our roadmap and the way LANSA has, is and will continue to shape the low- and mid-code space. He will be joined by Edgar Wharton, LANSA Product Manager.

The Business Side of Low-Code

Tony Graham, LANS

A Product Marketing Manager, touches on the benefits and potential pitfalls of low-code platforms. Using low-code can save company resources and reduce app development costs, but is low-code right for every solution?

Progressive Web Apps/UX

Edgar Wharton, LANS

A Product Manager, deep dives on progressive web applications and user design, and how they impact low-code strategies. Progressive web apps reduce costs and time compared to developing native apps—here's our take on their place in the market.

A Deep Dive into Smart Modernization

Eugene King, LANS

A Sales Engineer, gives an in-depth session on how to modernize effectively, at your own pace, saving the company valuable resources. Integrate legacy, .Net, modern web, and 5250 apps into one framework.

Build a Customer Portal in No Time

Tony Graham, LANS

A Product Marketing Manager, looks at an off-the-shelf enterprise portal solution that is fully scalable and customizable. Need a portal? Want to hear about some great use cases for a low-code solution? Register and see just how quickly you can spin up a portal for your customers.

Adding APIs to Existing Apps

Jurgen Rentinck, LANS

A Sales Engineer, shows developers how easy it is to add APIs to existing Visual LANSA applications. Visual LANSA v15 makes publishing and consuming APIs easier than ever and adding API functionality to an existing web app is a breeze.

Debugging your Web Application

Andrew Vaiciunas, LANS

A Sales Engineer, demonstrates the most efficient and effective methods for troubleshooting your Visual LANSA web applications. Troubleshooting web applications can be a little tricky, so whether you are a new Visual LANSA developer or an old pro, this session has something for everyone needing to debug a web application.

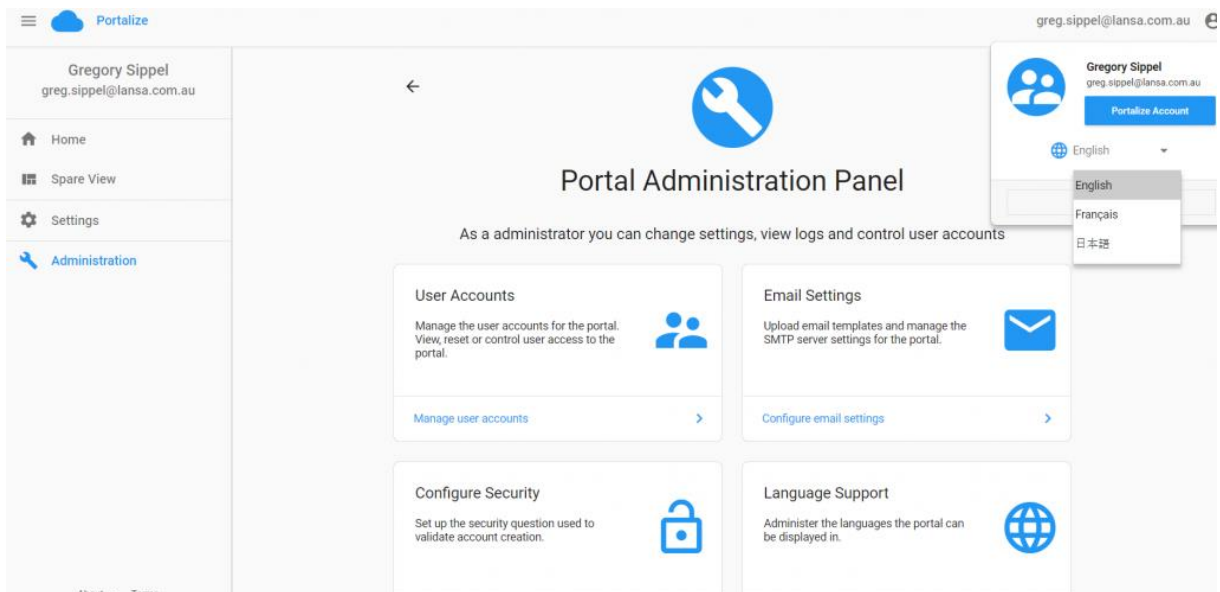
Portalize with Multilingual functionality



The Visual LANSA low-code platform has always been capable of multilingual development. Developers around the globe are creating Visual LANSA applications in a variety of languages. So, what makes the multilingual upgrade to Portalize so special? Let's take a look.

Change Languages on the Fly

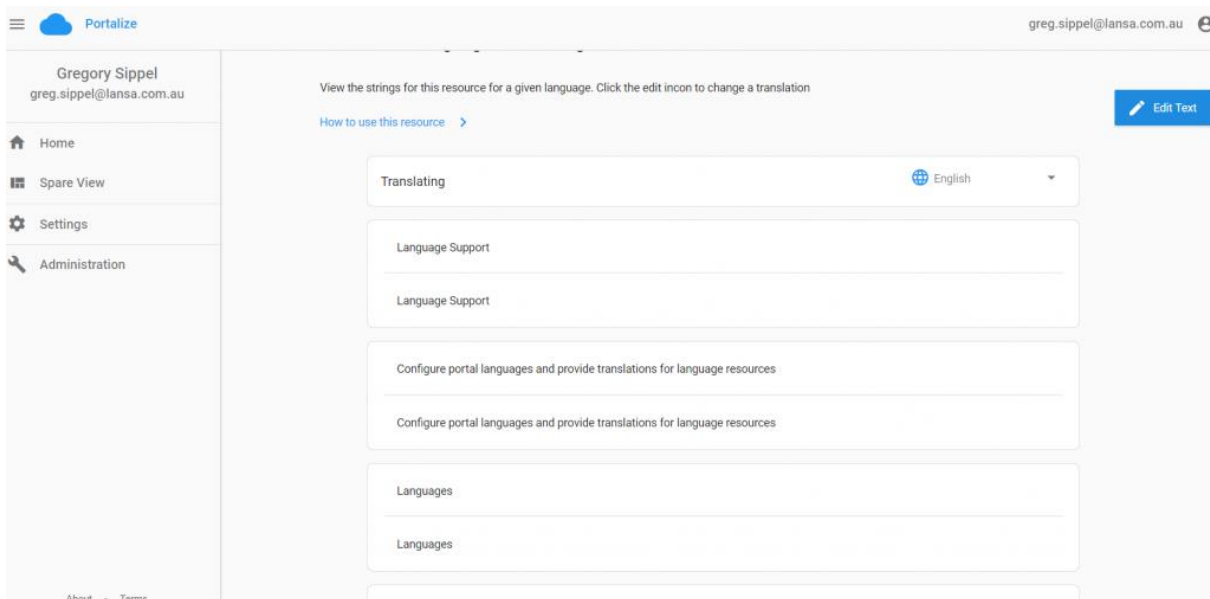
The language support version of Portalize allows the user to change the language of the portal on the fly. This isn't just a language change for the portal's text; it goes much deeper. Generated PDFs, emails, and exported logs will all be changed to the new language.



Users can select their language on the fly! Maintain one portal with numerous user languages.

Add New Languages Without a Single Line of Code

Portalize with language support has the ability to add new languages on the fly as well. A new language can be created and then each section of Portalize can be translated for the new language. Yes, adding a new language can be done without a developer or a single line of code!



Translate the text on any screen inside Portalize, without a single line of code!

How Does Portalize Handle New Sections Added Later?

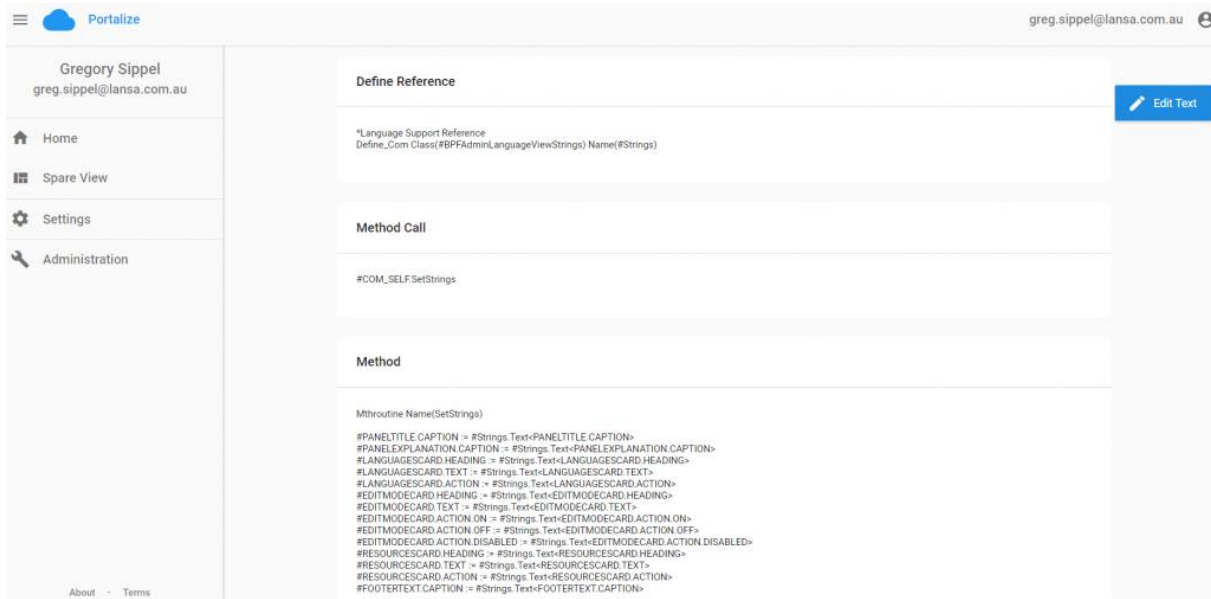
Any new features you add to Portalize can be developed in the native language of the developer. You do not need to code any new features in the language of the end users. This allows for faster development as the developer can quickly add new features and a non-developer can translate the new text on the fly, right inside Portalize.

One Portal for All Users

Portalize with language support does not use separate URLs for each language. Your entire company can use the same URL, the same portal, but the users will have the ability to select their language for their instance of the portal. This greatly simplifies your portal development, resulting in a significant reduction in development costs and development time.

More Goodies for Your Visual LANSAL Developers

Since you get the source code, your developers will have examples of how to use the new language support features in other Visual LANSAL applications. Portalize is not just an enterprise-ready portal; it gives your Visual LANSAL developers access to real examples that can be repurposed in other applications as well as help text so developers can understand what is going on.



Developers can see code driving each option from inside Portalize.

Save Time and Money

Portalize is designed to give you almost everything your enterprise portal needs right out of the box. Simply add your Visual LANSA application to the Portalize framework, and you can quickly launch your portal. Portalize with language support ships with English, Japanese, and French and the ability to add languages as needed. To find out more about Portalize, [click here](#), or contact Sales@lansa.com to inquire about a demo.

A great article on Portalize published recently in the IT Jungle:

<https://www.itjungle.com/2020/09/02/visual-lansa-customers-can-now-portalize-their-apps/>



TPTH x_run parameter has been changed in LANSAs V15

The x_run parameter TPTH contains the fully qualified directory for temporary files.

LANSA V9 until V14 SP2: TPTH default uses the User's %temp% directory
LANSA V15: TPTH default uses <installdir>\tmp\

See: https://docs.lansa.com/15/en/lansa015/content/lansa/l4wdepb3_9115.htm

The TPTH x_run parameter is no longer looking for TEMP or TMP environment variables.

The temporary path evaluation depends on the platform.

The temporary path directory is resolved in the following order:

1. TPTH x_run parameter, in any of the accepted locations for an x_run parameter.
2. Try to create the temporary directory, depending on the platform:
Windows: "<rootdir>/tmp" directory.
Other platforms: "<sysdir>/tmp" directory.
3. Try to use the existing directory, depending on the platform:
On Linux: /tmp
On other platforms: <sysdir>
4. It should never get here, but if it does, a Fatal error occurs. Interactive jobs will show a message box and server jobs will output a message to STDOUT. On Windows the Listener can be run as a process rather than as a service to see these messages (lcolist -sstop; lcolist -c -d -x)

* On Windows, LANSAs installed under "c:\program files\lansa":

<sysdir> under 64bit is "c:\program files\lansa\x_win64\x_lansa"
<sysdir> under 32bit is "c:\program files\lansa\x_win95\x_lansa"
<rootdir> is "c:\program files\lansa"

* On Linux and IBM i it could be /home/LANSAs_xyz/x_lansa where xyz is the name of the system.

Enclosing double quotes and all trailing path separators and blanks are stripped before validating the directory.

If the directory does not exist, then an attempt will be made to create it. If it fails, then the next step is used.

On Linux and IBMi, the log directory follows the same path as the temporary directory on Windows.
That is:

1. LOGDIR environment variable
2. <sysdir>/log directory, if it exists or if it can be created
3. <sysdir>

To continue the same behaviour as in V14 and earlier:

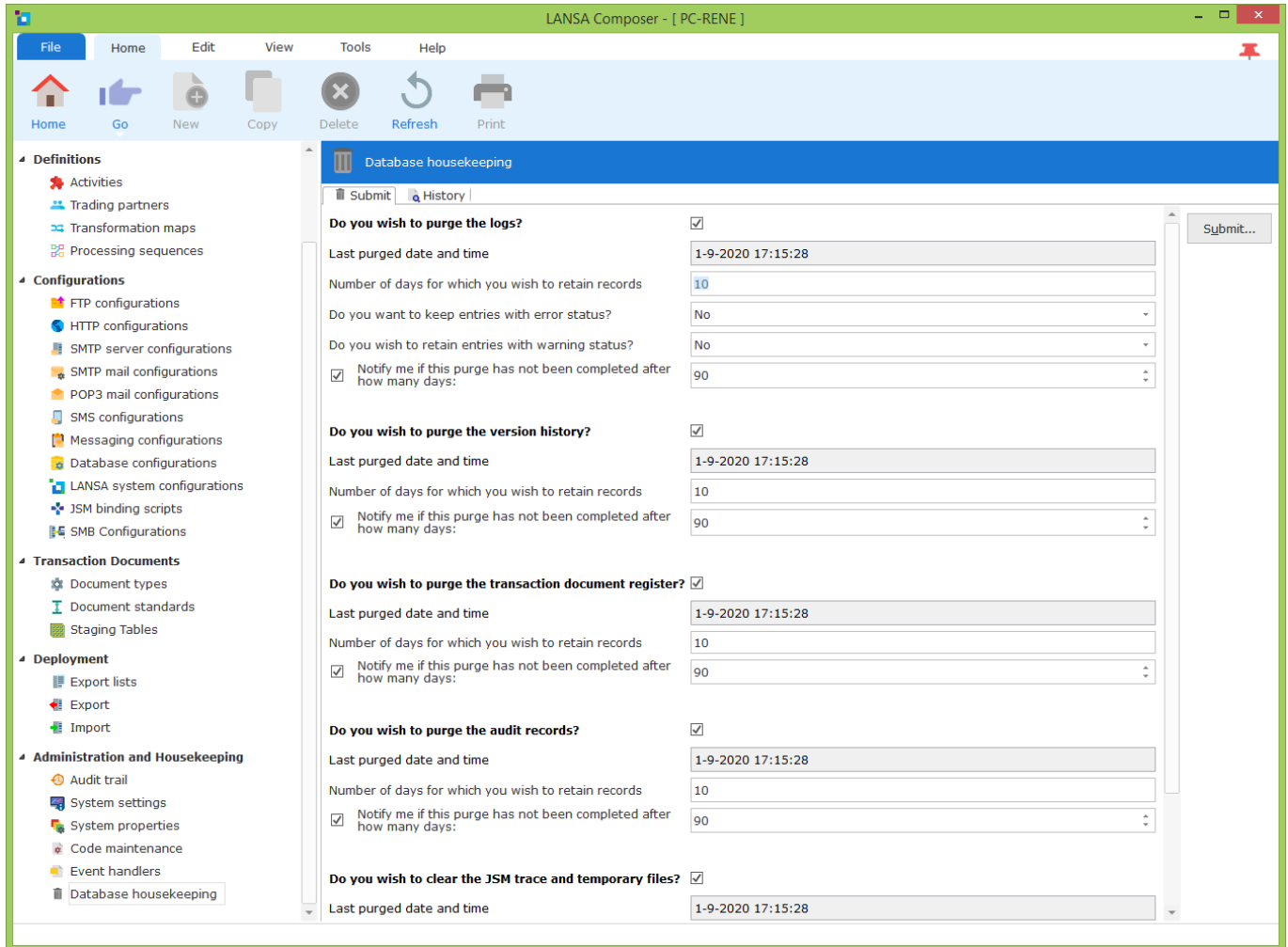
If you have an Application icon, using the X_RUN to start or the X_START command with a parameter file, you can add this to your parameters: TPTH=%TEMP%.

Note: you cannot use this in the X_LANSA.PRO file.



Composer Purge task via Windows Scheduler

To maintain and reorganize the LANSAs Composer database you can select Database Housekeeping under Administration and Housekeeping:



The database housekeeping screen displays when the housekeeping tasks were last run, as well as permitting you to enter the values to be used for future database housekeeping tasks.

After entering the required values there are two ways to proceed:

1. Save the values and submit the database housekeeping task from the command line
This technique allows you to integrate the database housekeeping task into your other operational procedures, for example, by scheduling it with a job scheduler. Remember that the database housekeeping task will need to run at a time when exclusive use of the LANSAs Composer system will be available to it.

You can click the Save button to save the values that will be used for any future database housekeeping tasks.

2. Submit the task directly from the LANSAs Composer client.
Click the Submit button to submit the task directly from the LANSAs Composer client using the values presently displayed.

Note: It is recommended that the submitted Database Housekeeping job should have exclusive access to the LANSAs Composer system. For this reason, the LANSAs Composer client application will close after submitting the Database Housekeeping task.

The Database Housekeeping job will log the main actions that it has performed into the LANSAs Composer log files. You can click the History tab to display or print the logs for completed Database Housekeeping tasks.

dxstart.exe Syntax and Parameters

You can specify switches and parameters on the dxstart.exe command line to control its behaviour.

```
dxstart.exe /request={dxclient|dtxmon|dxhelp|dxrun  
dxexport|dximport|dxreorg|dxregister|webadmin}  
  
/lang=lll  
  
/part=ppp  
  
/offline  
  
/shortcut=path  
  
/exportlist=name  
  
/exportto=path  
  
/importfrom=path
```



dxstart.exe Examples

Example 1: Start the LANSAL Composer client application:

```
dxstart.exe
```

Example 2: Start the LANSAL Composer Document Manager application in French:

```
dxstart.exe /request=dtxmon /lang=FRA
```

Example 3: Initiate a LANSAL Composer processing sequence run from the client computer using the processing sequence id and parameter values specified in the file c:\example.drun:

```
dxstart.exe /request=drun /shortcut="c\example.drun"
```

Example 4: Export LANSAL Composer definitions specified by the export list MY_EXPORT_LIST on a Windows server:

```
dxstart.exe /request=dxexport /exportlist=MY_EXPORT_LIST  
/exportto="C:\MY_EXPORT001.dxexport"
```

Example 5: Import the LANSAL Composer definitions contained in the specified export file on a Windows server:

```
dxstart.exe /request=dximport /importfrom="C:\MY_EXPORT001.dxexport"
```

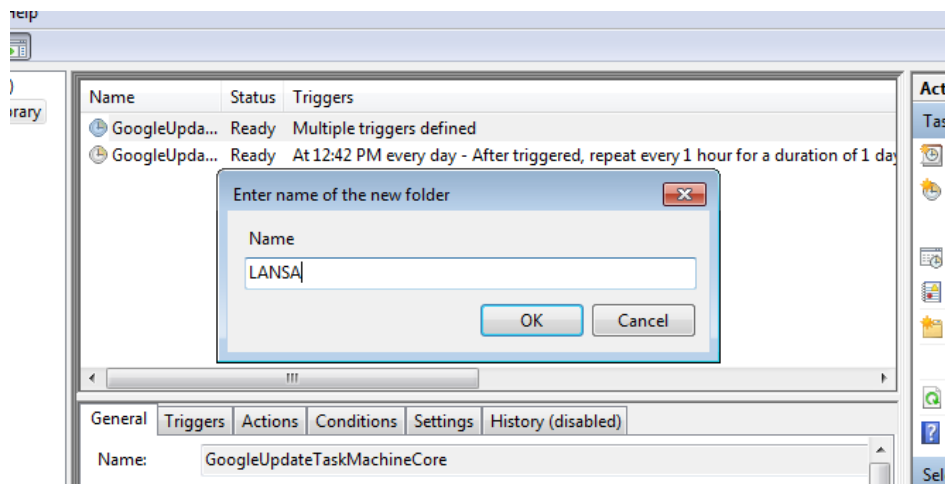
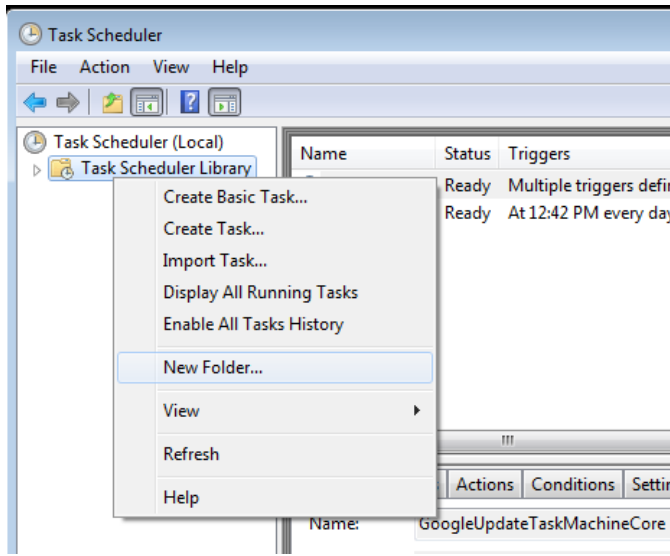
Example 6: Execute the LANSAL Composer database housekeeping task on a Windows server:

```
dxstart.exe /request=dxreorg
```

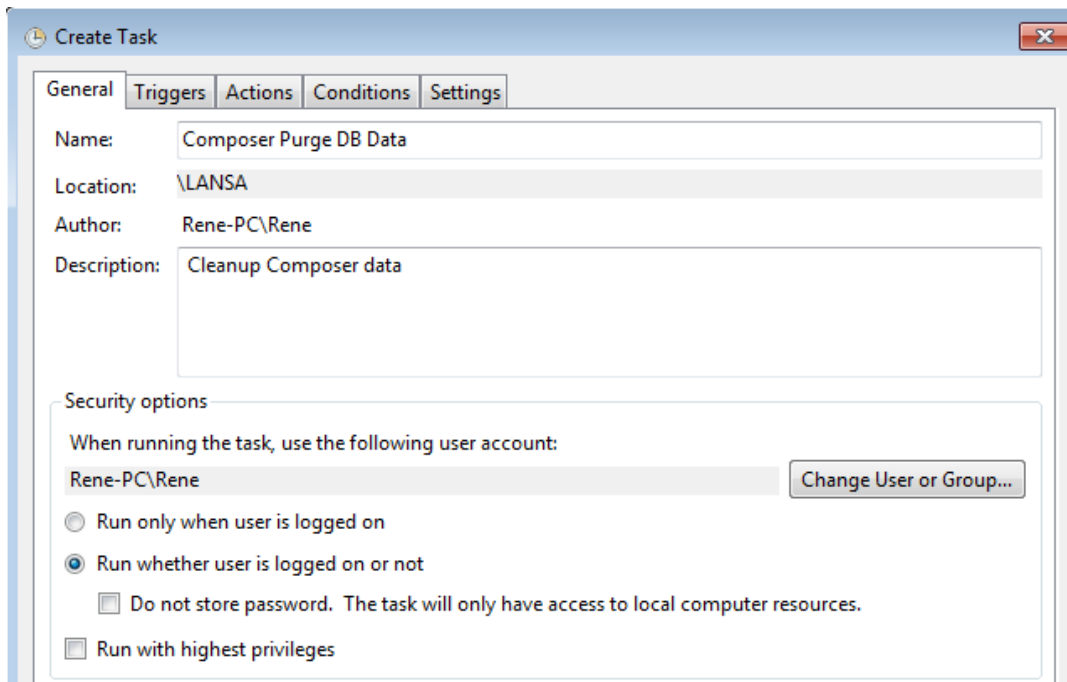
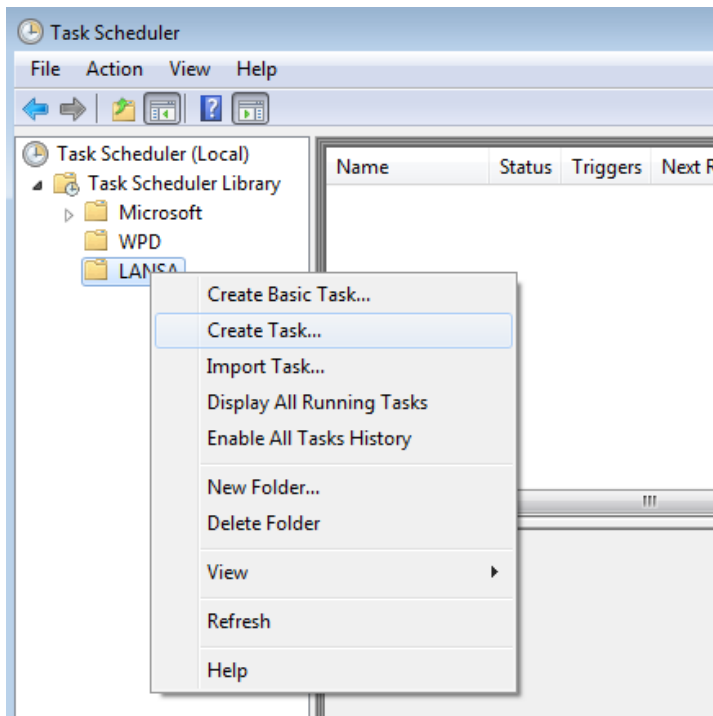
The following example shows how the Purge Data of LANSAL Composer can be executed via the Windows Task Scheduler.

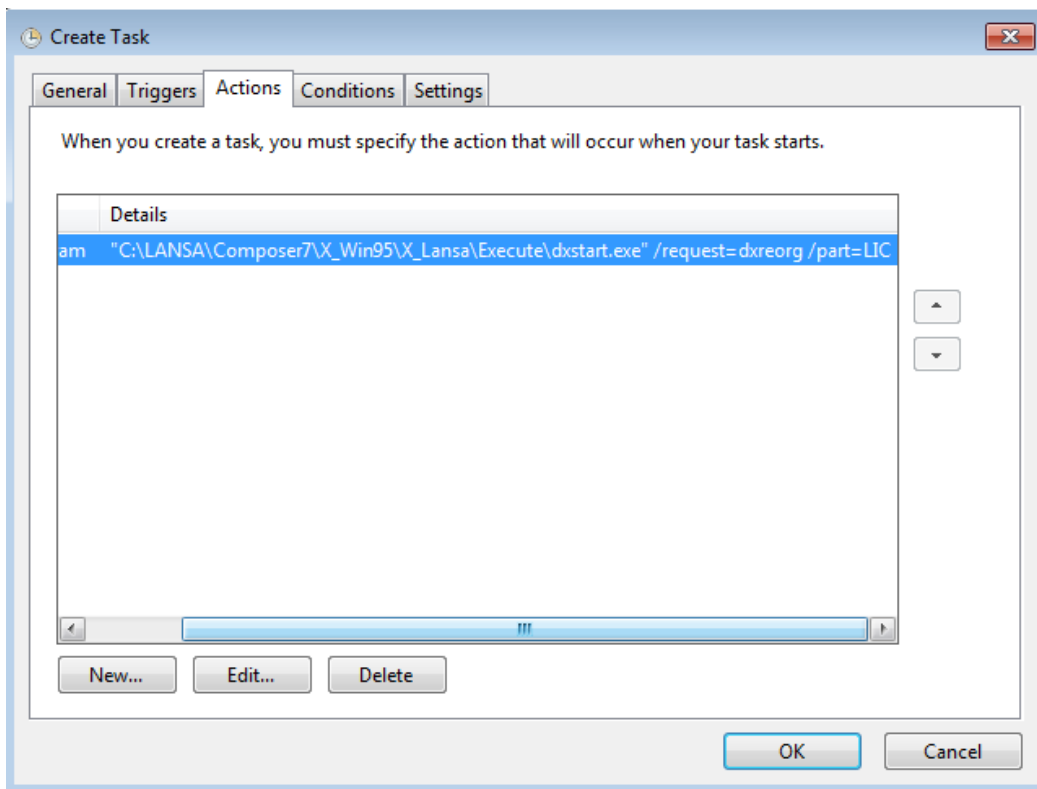
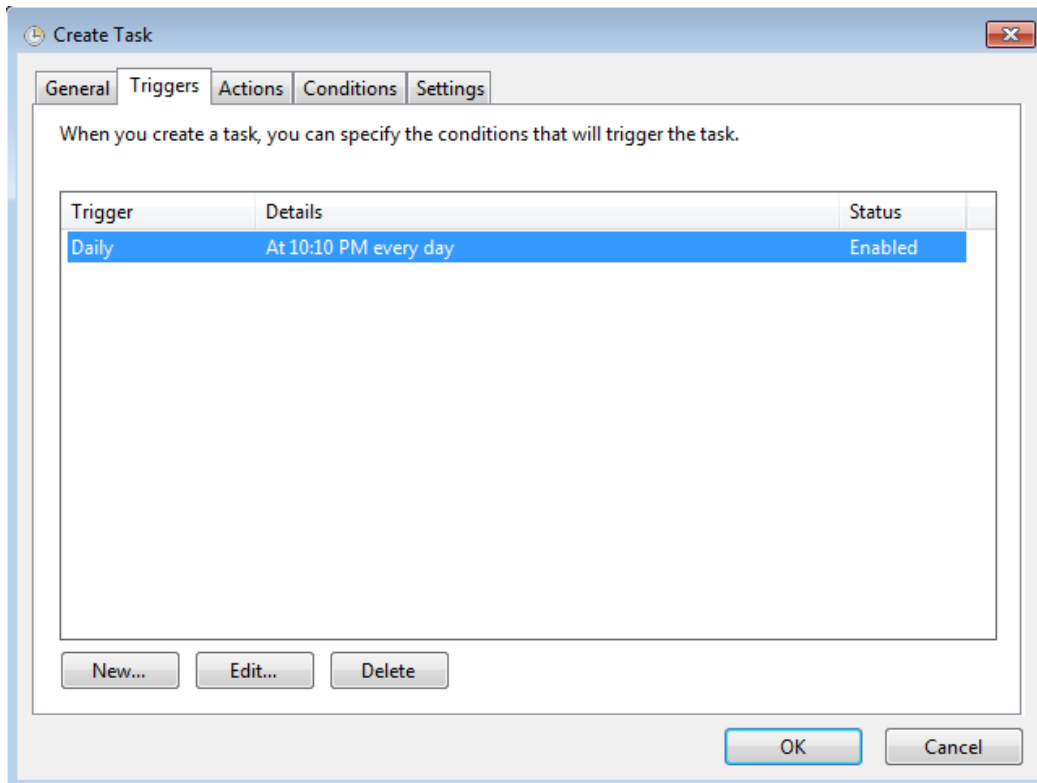
This implementation is minimalistic as a single Task in Windows with hard-coded parameters (location, language, partition), but can possibly also be executed by a somewhat more extensive version via a LANSAL Function, whereby it can become more dynamic (in terms of language, partition, home directory, etc). So, here is the quick version.

1. Start the Windows Task Scheduler.
2. Create a new folder (name LANSAL).



3. Create a new task in this folder.

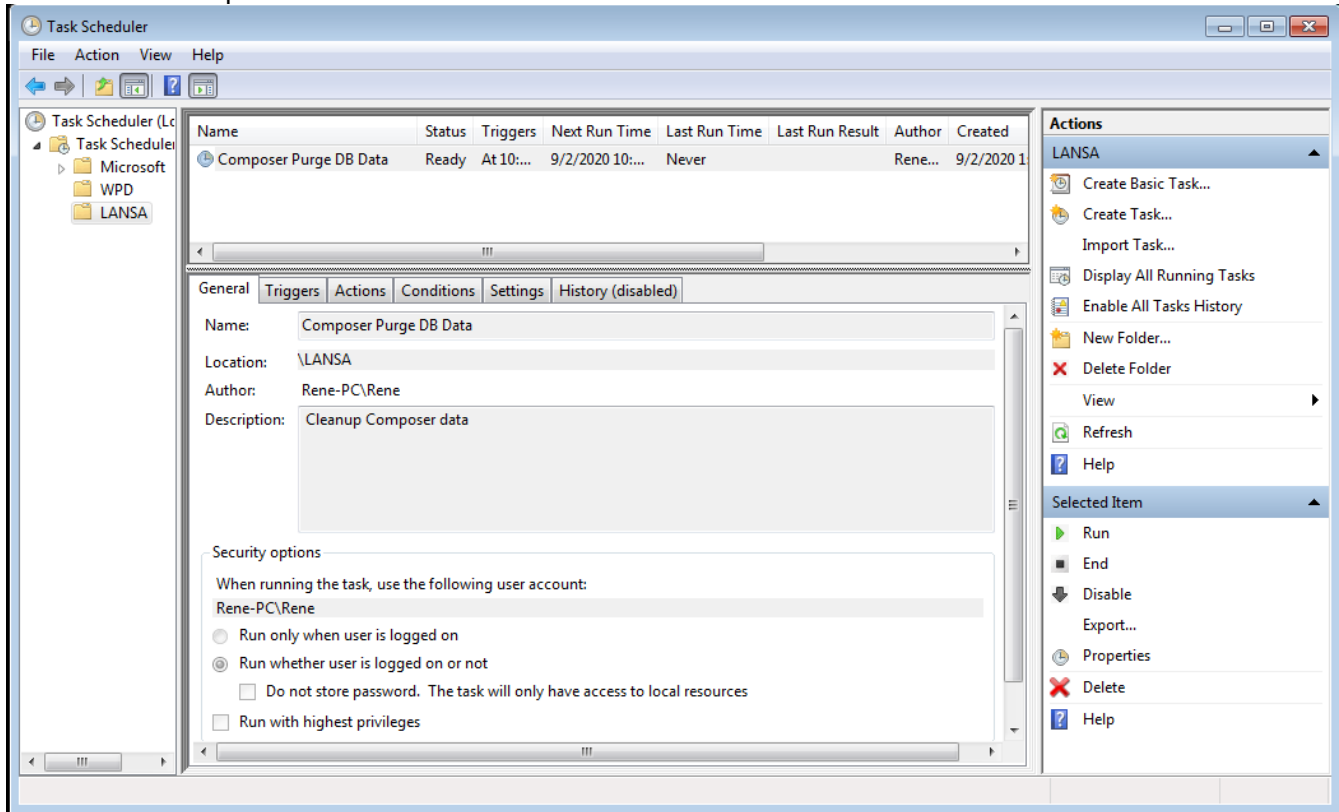




Action: "C:\LANSA\Composer7\X_Win95\X_Lansa\Execute\dxstart.exe"

Parameters: /request=dxreorg /part=LIC

The new task is part of the Windows Scheduler now:







Visual LANSA Forum

The Visual LANSA Forum is gaining membership and popularity!
<http://vlforum.lansa.com.au/index.php>

Membership is free and easy.

Join in to find out more about Visual LANSA related:

- "Questions & Answers"
- "Tips and Techniques"
- "Suggestions for Product Enhancements"
- "Product Announcements"

VISUAL LANSA	
	Questions & Answers This Q&A forum allows users to post and respond to "How Do I Do" questions. Please do not use to report (suspected) errors - you must use your regional help desk for this. The information contained in this forum has not been validated by LANSA and, as such, LANSA cannot guarantee the accuracy of the information.
	Tips and Techniques This forum allows developers to post programming tips and coding techniques that may be useful to other Visual LANSA developers. The information contained in this forum has not been validated by LANSA and, as such, LANSA cannot guarantee the accuracy of the information.
	Suggestions for Product Enhancements Please log all suggestions for improvements and enhancements to Visual LANSA here. All entries will be acknowledged and added to the list for possible inclusion in later releases of Visual LANSA.
	Product Announcements Read-only forum. Used to announce new releases of LANSA.